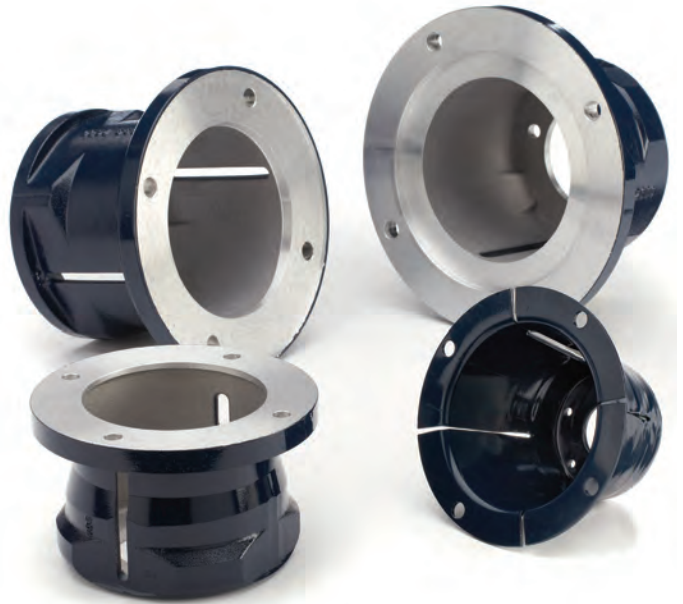


Pump Motor Adapters

Pump/Motor Adapters, NEMA

Part Number	Pump Model	Motor Size
A04-005-1200	F22	56C-145TC
A04-001-1202	D03 & D04	56C-145TC
A04-002-1202	D03 & D04	182TC-215TC
A04-001-1200	D10	56C-143/145TC
A04-002-1200	D10	182/184TC-213/215TC
A04-041-1200	D15/D17 & H25	182TC-256TC
A04-041-1202	D15/D17 & H25	284TC-286TC

Note: Dimensional drawings are shown in each pump model section.



Pump Motor Baseplates and Guards

- Feature heavy-gauge construction
- Ready to assemble - all mounting holes are fully threaded
- Complete package includes all mounting hardware, guards, and shims
- Available for size 56 through 326 NEMA motor frames
- Choice of blue epoxy-powder-coated steel or Grade 304 Stainless Steel baseplates
- Pump, motor, adjustable motor base (for HBD Series), coupling, flange adapter, pulleys, and belt ordered separately
- Customized versions available

HDD Series

Horizontal Direct Drive with Orange Coupling Guard



Designed for Hydra-Cell models D10, D15, H25 and D35. (D10 shown)

HFD Series

Horizontal Direct Drive with Flanged Adapter



Designed for Hydra-Cell models D10, D15 and H25. (D10 shown)

HBD Series

Horizontal Belt Drive with Belt Pulley Guard



Designed for Hydra-Cell models D10, D15, H25 and D35. (D35 shown)

Pump Motor Baseplates and Guards



Required Motor Information		HDD Series Horizontal Direct Drive			HFD Series Horizontal Flanged Adapter Drive			HBD Series Horizontal Belt Drive		
Frame Size	Motor Shaft (in.)	Order Number		Dimensions L x W x H (in.)	Order Number		Dimensions L x W x H (in.)	Order Number		Dimensions L x W x H (in.)
		Steel	SST		Steel	SST		Steel	SST	
D10 Pump Shaft Ø: 7/8" Bases and guards are contour-formed for maximum strength and safety. Steel thickness from 10 to 7 gauge.										
56C	5/8	104-050	104-051	21x11x11	104-052	104-053	21x11x11	104-150	104-151	23x14x12
143T	7/8	104-050	104-051	21x11x11	104-052	104-053	21x11x11	104-150	104-151	23x14x12
145T	7/8	104-050	104-051	21x11x11	104-052	104-053	21x11x11	104-150	104-151	23x14x12
182T	1-1/8	104-000	104-001	22x13x10	104-002	104-003	22x13x12	104-100	104-101	29x16x14
184T	1-1/8	104-000	104-001	22x13x10	104-002	104-003	22x13x12	104-100	104-101	29x16x14
213T	1-3/8	104-030	104-031	25x14x13	104-032	104-033	25x14x13	104-100	104-101	29x16x14
215T	1-3/8	104-030	104-031	25x14x13	104-032	104-033	25x14x13	104-100	104-101	29x16x14
D15 Pump Shaft Ø: 1-1/8" Heavy-duty contour-formed and welded reinforced design. All steel plates 3/16" thick.										
182T	1-1/8	104-830	104-831	30x15x14	104-870	104-871	30x15x14	-	-	-
184T	1-1/8	104-830	104-831	30x15x14	104-870	104-871	30x15x14	-	-	-
213T	1-3/8	104-820	104-821	30x15x14	104-860	104-861	30x15x14	104-890	104-891	39x24x17
215T	1-3/8	104-820	104-821	30x15x14	104-860	104-861	30x15x14	104-890	104-891	39x24x17
254T	1-5/8	104-810	104-811	39x18x18	104-850	104-851	39x18x19	104-880	104-881	39x24x17
256T	1-5/8	104-810	104-811	39x18x18	104-850	104-851	39x18x19	104-880	104-881	39x24x17
284T	1-7/8	104-800	104-801	39x18x20	104-840	104-841	39x18x19	-	-	-
286T	1-7/8	104-800	104-801	39x18x20	104-840	104-841	39x18x19	-	-	-
H25 Pump Shaft Ø: 1-1/8" Heavy-duty contour-formed and welded reinforced design. All steel plates 3/16" thick.										
143T	7/8	-	-	-	-	-	-	104-480	104-481	31x18x17
145T	7/8	-	-	-	-	-	-	104-480	104-481	31x18x17
182T	1-1/8	104-350	104-351	30x15x15	104-380	104-381	30x15x15	104-450	104-451	31x18x17
184T	1-1/8	104-350	104-351	30x15x15	104-380	104-381	30x15x15	104-450	104-451	31x18x17
213T	1-3/8	104-375	104-376	30x15x15	104-380	104-381	30x15x15	104-440	104-441	39x24x17
215T	1-3/8	104-375	104-376	30x15x15	104-380	104-381	30x15x15	104-440	104-441	39x24x17
254T	1-5/8	104-330	104-331	39x18x15	104-304	104-309	39x18x15	104-400	104-401	39x24x17
256T	1-5/8	104-330	104-331	39x18x15	104-304	104-309	39x18x15	104-400	104-401	39x24x17
284T	1-7/8	104-300	104-301	39x18x15	104-304	104-309	39x18x15	-	-	-
286T	1-7/8	104-300	104-301	39x18x15	104-304	104-309	39x18x15	-	-	-
D35 Pump Shaft Ø: 2" Heavy-duty contour-formed and welded reinforced design. All steel plates 1/4" thick.										
182T	1-1/8	-	-	-	-	-	-	104-750	104-751	40x28x19
184T	1-1/8	-	-	-	-	-	-	104-750	104-751	40x28x19
213T	1-3/8	104-660	104-661	48x20x18	-	-	-	104-740	104-741	40x28x19
215T	1-3/8	104-660	104-661	48x20x18	-	-	-	104-740	104-741	40x28x19
254T	1-5/8	104-650	104-651	48x20x18	-	-	-	104-730	104-731	40x28x19
256T	1-5/8	104-650	104-651	48x20x18	-	-	-	104-730	104-731	40x28x19
284T	1-7/8	104-640	104-641	48x20x18	-	-	-	104-700	104-701	40x28x19
286T	1-7/8	104-640	104-641	48x20x18	-	-	-	104-700	104-701	40x28x19
324T	2-1/8	104-600	104-601	48x20x18	-	-	-	-	-	-
326T	2-1/8	104-600	104-601	48x20x18	-	-	-	-	-	-